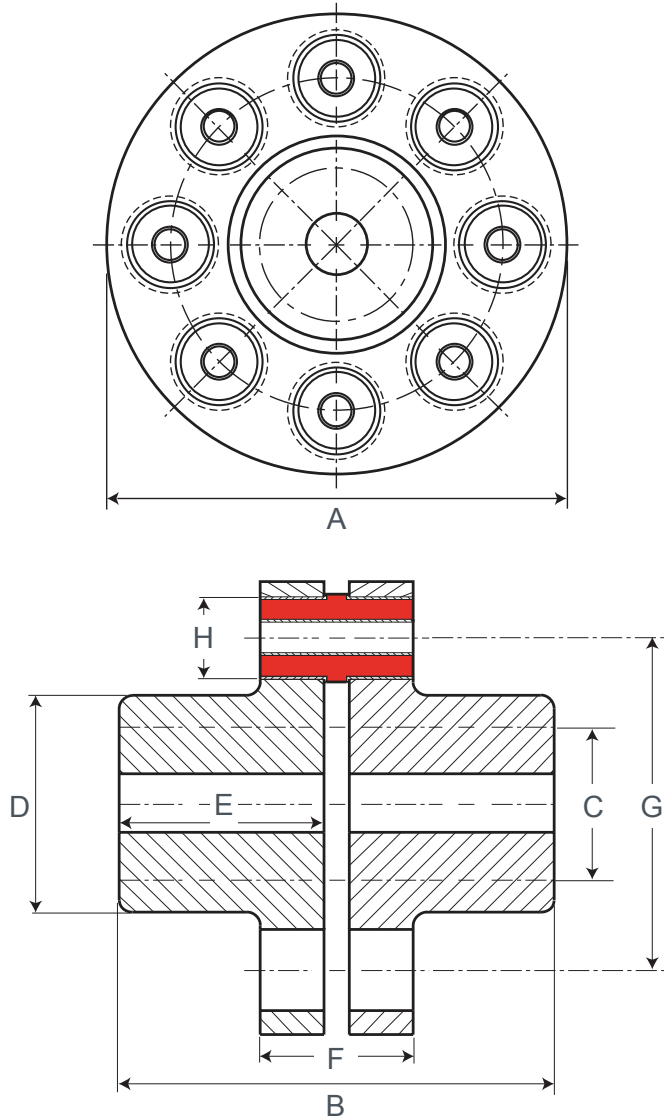


SPARE PARTS

GV Coupling

Recommended in case of very high speed of rotation.



| Coupling Reference | Nominal torque (N.m) | Max speed (rpm) | Hole size C (mm) | | A (mm) | B (mm) | D (mm) | E (mm) | Type | Flexible stud | | F (mm) | G (mm) | H (mm) |
|--------------------|----------------------|-----------------|------------------|-----|--------|--------|--------|--------|------------|---------------|-----|--------|--------|--------|
| | | | min | max | | | | | | Reference | Qty | | | |
| 613101 | 80 | 9 000 | 10 | 35 | 100 | 125 | 56 | 60 | G.V.10-8 | 523102 | 8 | 35 | 76 | 16 |
| 613400 | 450 | 7 000 | 24 | 60 | 180 | 170 | 85 | 80 | G.V.40-8 | 523401 | 8 | 70 | 130 | 32 |
| 613800 | 1 000 | 5 000 | 35 | 70 | 220 | 235 | 100 | 110 | G.V.80-8 | 523801 | 8 | 115 | 150 | 40 |
| 613901 | 3 800 | 3 500 | 35 | 120 | 330 | 320 | 170 | 150 | G.V.150-10 | 523902 | 10 | 120 | 250 | 50 |
| 613902 | 5 400 | 3 000 | 35 | 140 | 380 | 340 | 200 | 160 | G.V.150-12 | 523902 | 12 | 120 | 300 | 50 |
| 613903 | 9 000 | 2 500 | 40 | 180 | 480 | 400 | 250 | 190 | G.V.150-16 | 523902 | 16 | 120 | 400 | 50 |

1 N.m ≈ 0,1 mkg